



www.cesefor.com

Cesefor is committed
in the fight against
climate change



Seriously committed to effective
equality of opportunities between
women and men

MedForum 2024

Analysis web platform, November 5th



INDEX

01 Design

- Principles and requirements
- Workflow

03 The tool

- Prototype

03 Data & information

- Provided by the system
- Provided by the user

01

Design



Design

Principles and requirements

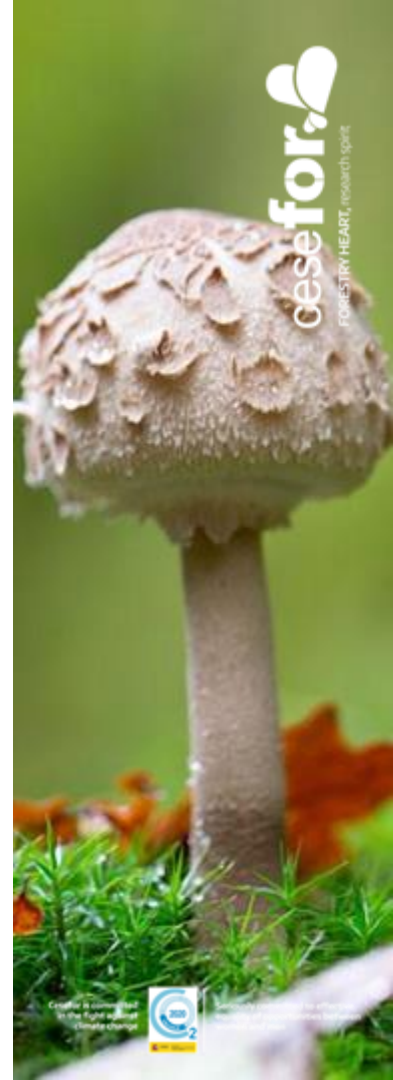
- Tailor made digital solution
- Data visualization, analysis and dissemination platform
- Experience visualizing diverse types of data, both quantitative and qualitative, within analytical frameworks rendered accessible and navigable on web-based tools.



Design

So,

- It allows users autonomy in keeping the information updated about the MF, FLR projects and their monitoring.
- It allows users to track the FLR project over time.
- It allows users to perform tailor-made analysis about the main characteristics of these FLR projects.
- It allows users to disseminate and report the information on the FLR projects that have been carried out within the MF.



Analysis tool

Workflow

Digitalization



Information collected



Analysis



Information generated



Dissemination



Information shared



02

The tool



The tool



Home



FLR
Projects



Monitoring



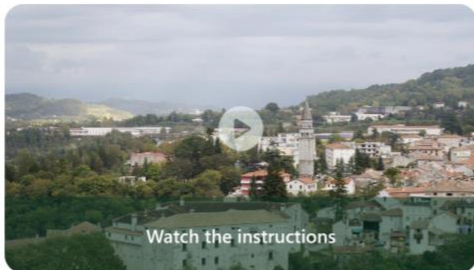
Analysis



Reporting



Marginal
lands



Foresta Modello delle Montagne Fiorentine

Londa FI, Italy / 1.800 ha / 2 projects

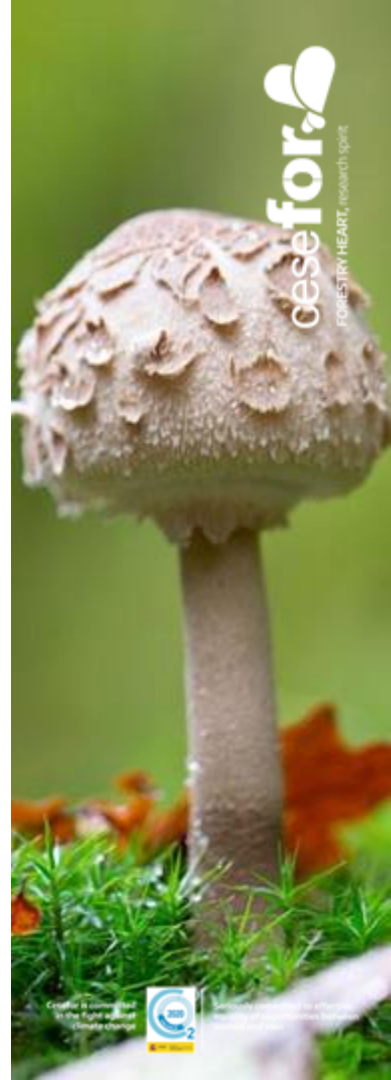
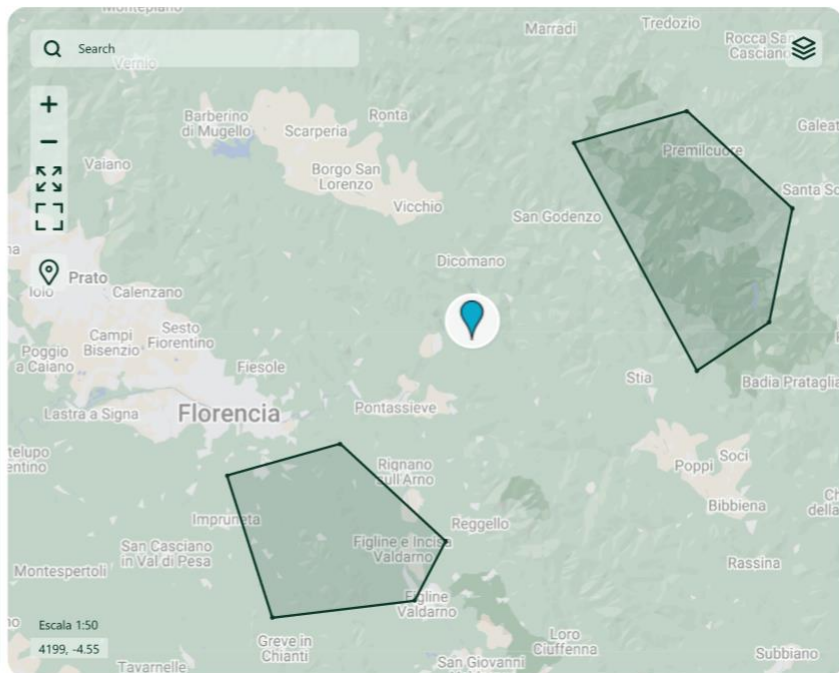
Description **FLR Projects** **Analysis** **Contact**

L'Associazione Foresta Modello delle Montagne Fiorentine ha carattere volontario e non ha scopo di lucro.

La Foresta Modello delle Montagne Fiorentine è localizzata in Toscana, nella parte orientale della provincia di Firenze al confine con la provincia di Arezzo. Si estende per 548 kmq, con una popolazione di 64.000 abitanti.

Il territorio della FMMF comprende 7 Comuni: San Godenzo, Londa, Pontassieve, Rufina, Pelago, Rignano sull'Arno, Reggello.

L'associazione vuole contribuire a migliorare l'integrazione e la sostenibilità della gestione dei boschi e del territorio, incrementando la coesione e la consapevolezza di insieme di tutte le componenti socio-economiche che direttamente o indirettamente afferiscono al territorio stesso.



03

Data & Information



cese for 
FORESTRY HEART, research spirit

cese for 
FORESTRY HEART, research spirit

Cese for is committed
in the fight against
climate change



Seriously committed to effective
equality of opportunities between
women and men

Data sources

User

Model Forest: boundaries, general description, photos.

FLR projects: boundary, general information about the Project (including photos), the restoration activities and monitoring

System

Area description and land cover/use information

Remote sensing based data (ndvi, fraction of vegetation cover, vegetation condition)

Statistical analysis: areas, evolution, monitoring

Tiemeline

2024	2024	2025	2025
Design and prototype Scope analysis of the tool design	Development Development of the platform	Data entry and platform checking Data input from model forest users. Learning process Platform checking	New functionality Areas suitable for new FLR projects



www.cesefor.com

Cesefor is committed
in the fight against
climate change



Seriously committed to effective
equality of opportunities between
women and men

Francisco Gallego Ciprés
francisco.gallego@cesefor.com

Cesefor
FORESTRY HEART, research spirit

THANK YOU VERY MUCH

