

MedForum2024

9th EDITION | THE MMFN GENERAL ASSEMBLY

Working Together for Sustainable and Resilient Mediterranean Forests

 Pau Gil Room, Sant Pau Art Nouveau Site | 4-5 November 2024 - BARCELONA, SPAIN

MedForum2024

9th EDITION | THE MMFN GENERAL ASSEMBLY

Albania Model Forest Initiative - Voskopja

Speaker: Prof.Dr.Hajri Haska

General overview

Starting – a short introduction .

From December 2012 till February 2015, we have participated as partner in the international Project: Adriatic Model Forest- AMF, where Croatian Forest Research Institute was leader and some other partners from Croatia, Italy, Greece, Montenegro, Serbia, BiH, Albania, were Prof. Haska have been coordinator for Albanian partner.

We have proposed as site selection commune of Voskopoja, in Korca region.

In the framework of this project, we organized about 4 workshops and an international meeting in 2014.

This project was the beginning of Model Forest in Albania

General overview

Reactivation

Having constant contact with the partners of the AMF Project, as well as with MMFN, we reactivated this again by creating AMFI-Voskopojë, reactivating all the potential that had been reserved until then in Voskopojë, as well as in cooperation with the Municipality of Korça, where the commune of Voskopje is a part, in June 2023 we will officially submit the request to the MMF secretariat to be recognized as AMFI - Voskopje first, then we will become a candidate country and finally a full member of MMFN.

The MMF Secretariat has supported us and kept us constantly in touch and invited us to all activities, covering our expenses in the activities carried out by the MMFN.

General overview



ButWhat is a Model Forest ????

A Model Forest is a voluntary association of people that live in a particular territory, and are interested in discovering, defining enhancing and guarantying its sustainability; and in sharing their experiences and their knowledge to contribute to global environmental goals.



ButWhat is a Model Forest ????

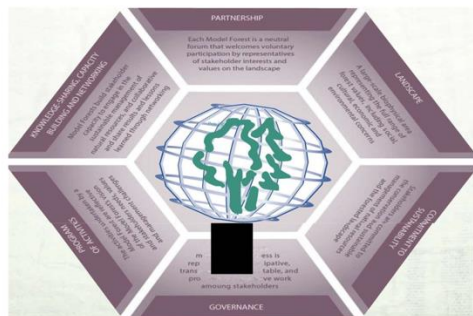
Model Forests are based on an approach that combines the social, cultural and economic needs of local communities with the long-term sustainability of large landscapes in which forests are an important feature. By design they are voluntary, broad-based initiatives linking forestry, research, agriculture, mining, recreation, and other values and interests within a given landscape.

Model Forests are as much about the people who sustain themselves from the forest as they are about trees and forest products - they're a fully working landscape of forests, farms, protected areas, rivers and towns.

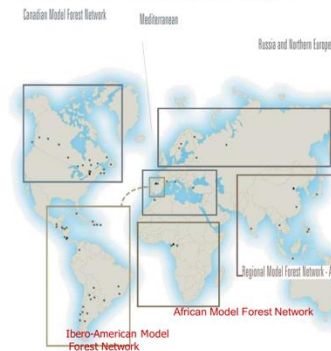
In a Model Forest a variety of people with differing interests and perspectives form a neutral partnership based on the following goal: to manage their own natural resources in a way that makes the most sense to them given their history, economic and cultural identities and in a way that does not jeopardize future generations.



Principles and Attributes



International Model Forests network



The International Model Forest Network (IMFN) is a global community of practice whose members and supporters work toward the common goal of the sustainable management of forest-based landscapes through the Model Forest approach. The IMFN is comprised of all member Model Forests around the world.

Mediterranean Model Forest Network

The Mediterranean Model Forest Network was officially announced by representatives from Spain at the 2008 IMFN Global Forum. The Urban Model Forest was established in 2006 in Spain's Castilla y Leon region. While the Model Forest initially became a member of the Ibero-American Model Forest Network, there was also a vision to expand Model Forest development throughout the Mediterranean region with its unique forests and landscapes. Since the 2008 establishment of the Mediterranean Model Forest Network, 13 regions and countries have joined and are in the process of developing Model Forests. In 2012, two new Model Forests, Ifrane in Morocco and Yalova in Turkey, have joined the International Model Forest Network (IMFN). In 2012, the Montagne Fiorentina Model Forest in the Tuscany region of Italy became a member of the Network. Members of the Mediterranean Model Forest Network: Region of Castilla y Leon (Spain), Region of Murcia (Spain), Region of Corsica (France), Region of Provence-Alpes-Cote d'Azur (France), Region of Sardinia (Italy), Region of Tuscany (Italy), Region of Istria (Croatia), Prefecture of Magnesia (Greece), Region of Western Macedonia (Greece), Turkey, Tunisia and Morocco.

Model Forests are based on a flexible approach to landscape and ecosystem management that combines the social, environmental and economic needs of local communities with the long-term sustainability of large landscapes in which forests are an important feature. By design, they are broad-based initiatives linking a broad mix of stakeholders and sectors and other values and interests within a given landscape.

Three aspects central to a Model Forest are a large landscape, broad partnerships and a commitment to sustainability.

Landscapes: A large-scale biophysical area representing a broad range of forest values, including environmental, social, cultural and economic concerns.

Partnership: Each Model Forest is a neutral forum that welcomes voluntary participation of representatives of stakeholder interests and values on the landscape.

Sustainability: Stakeholders are committed to the conservation and sustainable management of natural resources and the forest-based landscape.

General overview

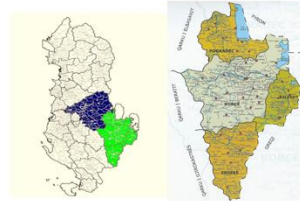
ALBANIA MODL FOREST INITIATIVE



Voskopoje

ALBANIA MODL FOREST INITIATIVE - Voskopoje

Site area location
Some reasons for choosing this area

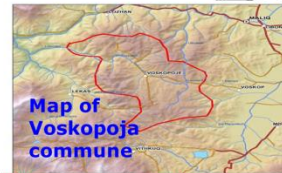


Location of Korca District :
South –East of Albania

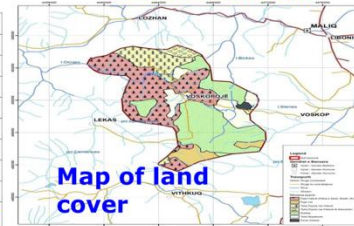
Population : 200 000
inhabitants (30 % living in
the city & 70 % in rural area

Forest wealth : Total 55 720
ha with 2. 098 Million m3

ALBANIA MODL FOREST INITIATIVE



| Land use | Surface in ha | |
|---------------------------|---------------|---------------|
| Conifer forests | 3569 | |
| Oak forests | 611 | |
| Woodland with conifers | 1177 | |
| Woodland with broadleaves | 285 | |
| Pasture | 3793 | 9 437 |
| Agricultural land | 1168 | |
| Urban area | 73 | 1 239 |
| Total | 10 676 | 10 676 |



Map of land cover

Voskopoje

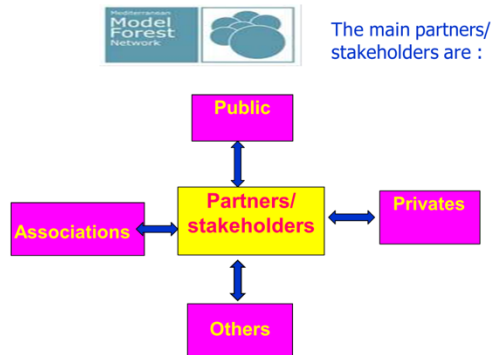
Some reasons for choosing this area
According to a study in all forest
surface of Albania, it is defined as an
area that **represent more important
criteria for Model Forest**

Some reasons for choosing this area

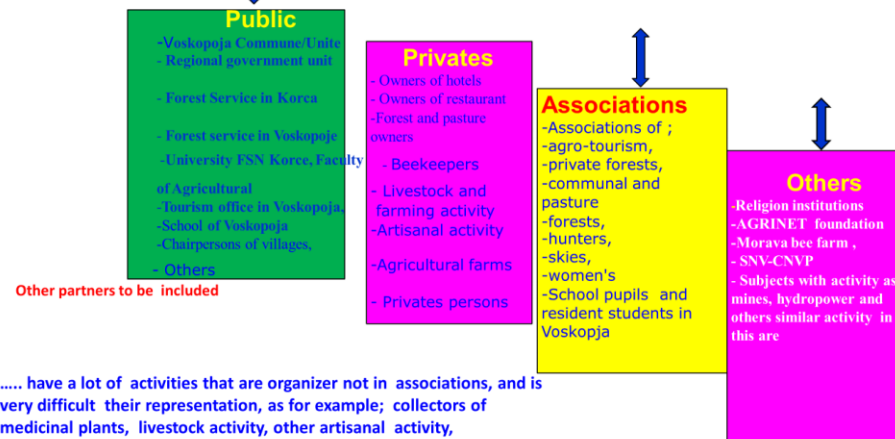
Main characteristics

- Geomorphology and climatic conditions – very good
- Good soil, a lot of water resources
- Growth many type of forest ecosystems
- Exist a very large area covered by pasture ecosystems
- Agricultural land good, small urban area
- Very rich biodiversity
- In this area exist a Protected Area, including it in category according to IUCN criteria–Nature Monuments; concretely a surface with forest from 50 ha with Pinus Nigra,

The main partners/ stakeholders are :



The main partners/
stakeholders are :



..... have a lot of activities that are organizer not in associations, and is very difficult their representation, as for example; collectors of medicinal plants, livestock activity, other artisanal activity, stonemason, other national and international Projects...etc...

Update on the activities

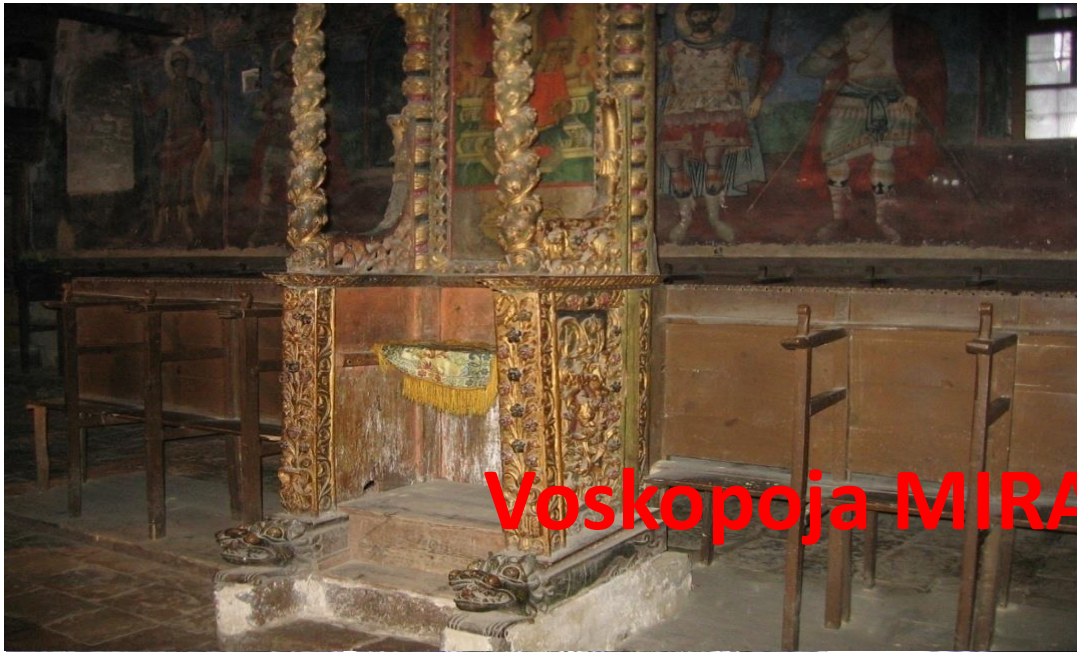
- ☐ Reactivation of potentials
- ☐ Creation of the Albania Model Forest Initiative-Voskopoje
- ☐ Submission of the official request to the MMF Secretariat
- ☐ Interest group meetings
- ☐ Workshop on March 5-6, 2024 in Voskopoje with the title: "Some of the most important concepts and guiding principles in the Forest Model for governance and integrated management of forest and natural resources-"
- ☐ Participation in Italy in the meeting at EDUCASE March 14, 2024 organized by MMFN
- ☐ Participation in the forest festival in Western Macedonia Model Forest, Greece
- ☐ Translation of some materials in Albanian for Model forest

Update on the activities

- ☐ **Creation of a Logo for AMFI-Voskopje**
- ☐ **The beginning of creating a Web for AMFI-Voskopje**
- ☐ **Organization of a workshop on friendly ways to collect of aromatic and medicinal plants plant gatherer and juridic subjects that operated in this fields**
- ☐ **Planification to the Voskopoje school of several hours for Forest pedagogy**
- ☐ **The possibility of organizing a Forest festival next year**
- ☐ **Participation in different activities about Model Forest**
- ☐ **Presentations about model forest**
- ☐ **Translations of materials for forest model**
- ☐ **Leaflet in Albanian language about model forest**

Challenges and way forward

- There are many challenges, obviously
- Of course, apart from the desire to develop something, financial support is also needed
- Looking at the possibility of finding financial support in the country
- Logistical support
- Support with different materials,
- Involvement of AMFI in projects other than MMFN and IMFN
- Financial support for planned and detailed activities
- Participation of the MMF secretariat in the activities that will take place in Albania
- Support from partners such as Croatia, Italy, Turkey, as well as WMF from Greece
- Others



Voskopoja MIRACLE



MedForum2024

9th EDITION | THE MMFN GENERAL ASSEMBLY

Thanks for your attention

Grazie per la vostra attenzione

شكراً على انتباهكم

Gracias por su atención

Merci pour votre attention

Ευχαριστώ για την προσοχή σας

Hvala na vašoj pažnji

Faleminderit për vëmendjen tuaj

Dikkitiniz için teşekkür ederim

Speaker: Prof.Dr.Hajri Haska