

MedForum2024

9th EDITION | THE MMFN GENERAL ASSEMBLY

Working Together for Sustainable and Resilient Mediterranean Forests

 Pau Gil Room, Sant Pau Art Nouveau Site | 4-5 November 2024 - BARCELONA, SPAIN

MedForum2024

9th EDITION | THE MMFN GENERAL ASSEMBLY

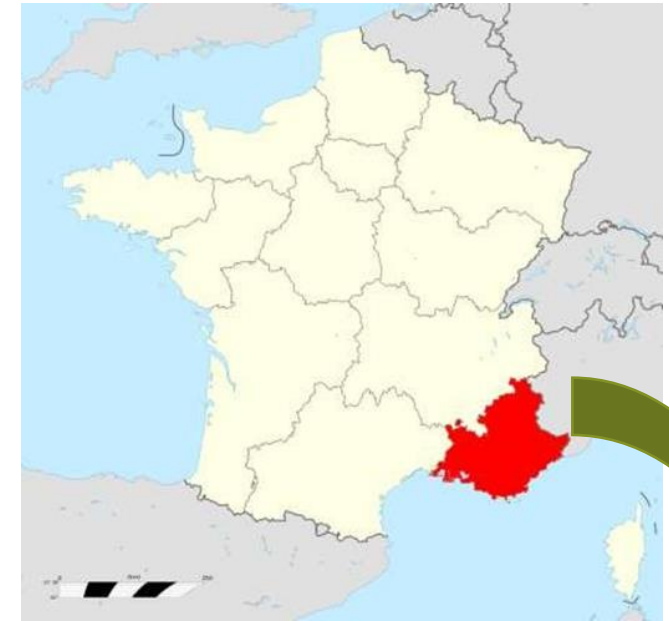
Forêt Modèle de Provence – “FMP” [*Provence Model Forest*]

Updates on activities, challenges, and successes

Speaker: Helena Papa

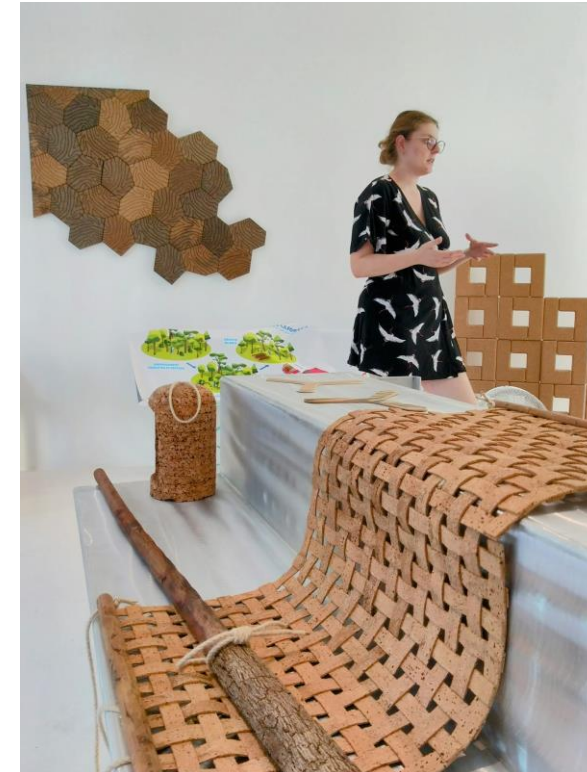
General overview – “FMP” is 10 years old !

- ❖ Created in 2013 by “PACA” regional initiative
- ❖ Consists of **4 forest massifs**: Étoile, Garlaban, Sainte Baume and Maures
- ❖ Covers **309 803 ha**, **77 municipalities**, **1,4 million inhabitants**
- ❖ **150 members** of different / heteroclite status and interest
- ❖ United under the moto: “**Valorisons ensemble notre forêt**”
- ❖ **Governed by 3 Councils**;
 - ❖ **Administration** (current affairs) made-up by 3 Colleges
 - ❖ **Surveillance** (presided by PACA Region) and
 - ❖ **Development** made-up by 4 Colleges
- ❖ Performs a **span of activities** encompassing:
 - **(I)** Education & Promotion
 - **(II)** Field activities and
 - **(III)** Research activities



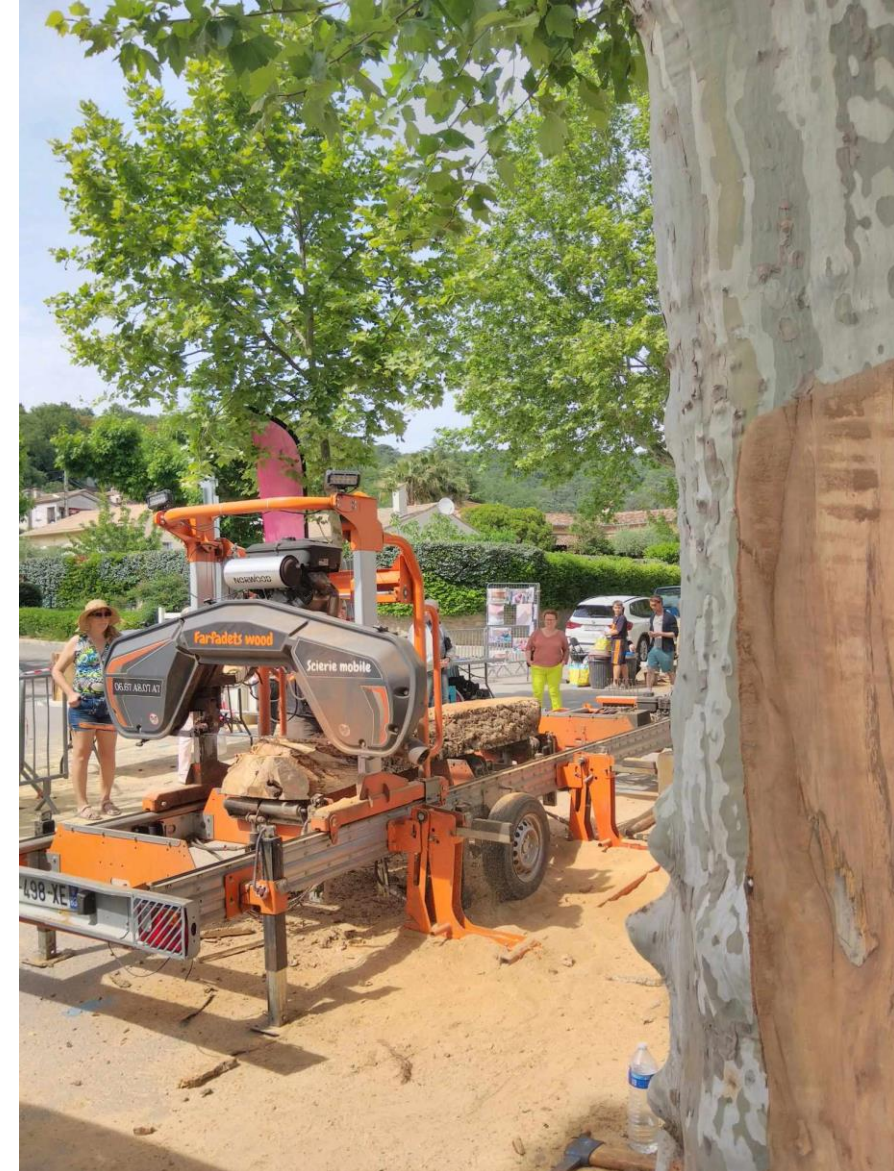
Update on latest activities (I) – Education & Promotion activities

1. *« Fête de la Ruralité » : annual festival organised every April (2024 = 94th edition) as part of the biggest agricultural fair of the South of France (« Foire Agricole de Brignoles ») oriented in sustainable agriculture and local gastronomy it lasts 10 days and attracts > 55.000 visitors, 10,000 of which, the last WE when la « Fête de la Ruralité » takes place*
2. *« Les Journées du Liège » 4th and 5th May 2024 à la Villa Noailles: a renowned art center of national interest with the exhibition of the Art and Design Competition that FMP organizes every year for 2 categories: Design and Woodturning. 4,800 visitors in a day and a half.*
3. *Le Week-end du Chêne-Liège: 19 October 2024 in an Estate with a remarkable garden; an event that highlights the cork industry, local production as well as the wood industry; 1,500 visitors in one day (19/10/2024).*



Update on latest activities (II) Field activities

1. *Setup of a new association “**Permabita**” with strong financial backing from FMP to support local resources (wood, cork, etc.) with a better structure of the local offer, allowing also to create new outlets, forge skills and further motivate people.*
2. *Within this associative model, the **mobile sawmill** is considered an essential tool, since in our territory, there is no more sawmill. Yet, end of July the sawyer had his sawmill stolen ! La Forêt Modèle de Provence (FMP) took immediate action and organized a **crowdfunding campaign resulting in 24,000€** collected in one month and a half! The mobile sawmill activity has been saved and relaunched accordingly !*



Update on latest activities (III) – Research activities

1. *With Côte d’Azur University (Nice) we conducted a study (bibliographic then tested in laboratory) on different **chestnut** samples for cosmetics’ use.*
2. ***Strawberry Tree (Arbousier)** : based on the momentum generated by the previous research and commercialization activities (cosmetic products, see photo) we **will create a consortium** to*
 - a) *structure the sector*
 - b) *launch a planting program and*
 - c) *implement a forestry protocol,**while we continue to encourage and support related economic initiatives.*
3. ***Study on the traditional beekeeping practice in Provence, through the so called “apiers”, a construction made of dry stones (see photo) to protect the hives made of chestnut and cork.***



Challenges and way forward

- ❑ **Forestry ecosystems' preservation – restoration** (including from climate change threats, wildfires and foreign species' invasion)
- ❑ **Demonstrate forest values** → multifunctional, innovative & inclusive space management
- ❑ **Educate / Motivate local population** (tailored activities / selective involvement for target groups)
- ❑ **Supporting wood related professions** (including dead wood recycling for biodiversity purposes)
- ❑ **Open-up forestry sector to Arts & Crafts**

Expectations / Aspirations from the Mediterranean Model Forest Network

- ↪ Learning from peers – targeted networking schemes
- ↪ Pooling innovation & intelligence to further promote forest values
- ↪ Enhancing impact

MedForum2024

9th EDITION | THE MMFN GENERAL ASSEMBLY

Thanks for your attention

Grazie per la vostra attenzione

شكراً على انتباهكم

Gracias por su atención

Merci pour votre attention

Ευχαριστώ για την προσοχή σας

Hvala na vašoj pažnji

Faleminderit për vëmendjen tuaj

Dikkitiniz için teşekkür ederim

Speaker: enter speakers Name