

MedForum2024

9th EDITION | THE MMFN GENERAL ASSEMBLY

Working Together for Sustainable and Resilient Mediterranean Forests

 Pau Gil Room, Sant Pau Art Nouveau Site | 4-5 November 2024 - BARCELONA, SPAIN

MedForum2024

9th EDITION | THE MMFN GENERAL ASSEMBLY

Western Macedonia Model Forest



Updates on activities, challenges, and successes

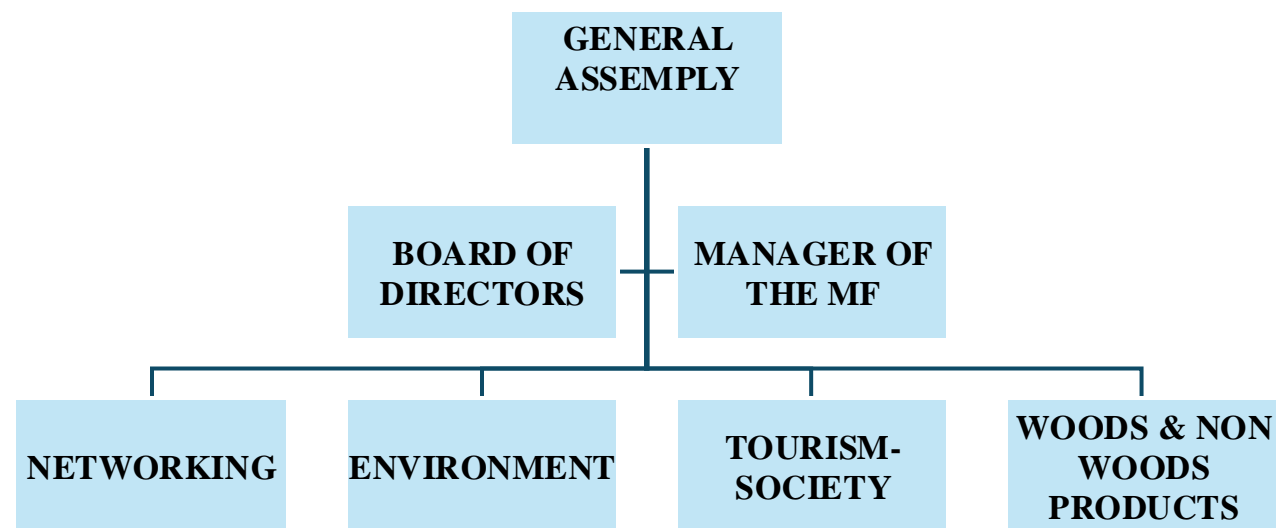
Speaker: Dimitris Tsimplinas

General overview

Map of the WMMF



Organizational structure



General overview

OVERVIEW OF CHARACTERISTICS OF WESTERN MACEDONIA MODEL FOREST

<https://modelforestwm.gr/>

AREA	945,100 Ha (7.2% of country's total)
NUMBER OF INHABITANTS	255.056
REGIONAL UNITS	Grevena, Kastoria, Kozani and Florina
UNEMPLOYMENT RATE	12%
FOREST OWNERSHIP	<ul style="list-style-type: none"> -Public : 62% -Municipal : 24% -Church : 0.4% -Joint Public & Private : 7.7% -Private : 5.2% -Communal : 0.6%
LAND COVER AND USE	<ul style="list-style-type: none"> • Agricultural land, 22.3% • Mixed forests, 3.45% • Coniferous forests, 4.52% • Broad-leaved forests, 16.95% • Transitional woodland / shrub, 21.89% • Lakes, 65% of country's total • Pastures, 11.64% • 24 NATURA 2000 areas
NO. OF STAKEHOLDERS	13 groups + 65 individuals
TYPES OF STAKEHOLDERS	<ul style="list-style-type: none"> -Region authority -Communities & municipalities -NGOs -Industries -Private sector (forestry)/ Forest Cooperatives -Chambers -Associations (Mountaineering, Cultural-Folklore)
GOVERNANCE	<ul style="list-style-type: none"> •General Assembly •Board of Directors (10 persons/5 permanent and 5 deputy members) •Evaluation Committee •Working groups •Dedicated staff

Update on latest activities

INTERNATIONAL DAY OF FORESTS

The Western Macedonia Model Forest in collaboration with the Municipality of Voio, the Forest Services of Regional Unit of Kozani, CERTH (Centre for Research & Technology Hellas) and the support of the Koukoulidis Foundation, took part in an event for the International Day of Forests.



Update on latest activities

FORESTIVAL 2024



- stands of wood and non-wood forest products (mushrooms, aromatic plants, forest honey)
- Tree climbing impressed our little friends



Update on latest activities

FORESTIVAL 2024



Forest therapy, forest bathing, mindfulness-meditation-flexibility-yoga filled with positive energy and well-being the participants and got to know the beneficial properties of this natural asset, the forest.

The introduction of the **Joelette**, a special wheelchair designed for mountain trails, which made its debut at this pan-Hellenic event and left a strong impression on attendees.

Update on latest activities



FORESTIVAL 2024



The festival offering children the chance to participate in **experiential games, educational workshops, and forest orientation activities.**



A highlight for many was **listening to the sounds of plants and trees** through specialized equipment, an experience that brought the forest to life in a whole new way.

Update on latest activities



FORESTIVAL 2024

Σάββατο 31 Αυγούστου & Κυριακή 01 Σεπτεμβρίου 2024

ΜΙΚΡΟΚΑΣΤΡΟ ΚΟΖΑΝΗΣ (ΧΩΡΟΣ FIESTA VINO)

FORESTIVAL

ΠΕΡΙΠΤΕΡΑ ΞΥΛΩΩΝ ΚΑΙ ΜΗ ΞΥΛΩΩΝ ΔΑΣΙΚΩΝ ΠΡΟΪΟΝΤΩΝ
ΑΚΟΥΣΤΕ ΤΟΥΣ ΗΧΟΥΣ ΤΩΝ ΦΥΤΩΝ ΚΑΙ ΤΩΝ ΘΕΝΤΡΩΝ

ΕΚΠΑΙΔΕΥΤΙΚΑ ΕΡΓΑΣΤΗΡΙΑ ΑΝΑΡΧΙΣΗ ΣΕ ΘΕΝΤΡΑ ΠΡΟΣΑΝΑΤΟΝΙΣΜΟΣ ΟΔΟΥΣ	ΟΡΘΟΘΕΡΑΠΕΙΑ FOREST THERAPY FOREST BATHING - ART THERAPY MINDFULNESS-MEDITATION-FLEXIBILITY-VOGA	ΣΥΝΑΥΛΙΑ ΕΝΤΕΧΝΙΟ & ΡΟΚ ΓΑΣΤΡΟΝΟΜΙΑ ΠΡΩΤΟΤΥΠΑ ΠΑΧΝΙΔΙΑ
--	--	--

ΠΡΩΤΗ ΠΑΝΕΛΛΗΝΙΑ ΠΑΡΟΥΣΙΑΣΗ ΤΟΥ **JOELETTE** ΕΙΔΙΚΟ ΑΜΑΞΙΔΙΟ ΑΜΕΑ ΓΙΑ ΜΟΝΟΡΑΤΙΑ

ΕΛΕΥΘΕΡΗ ΕΙΣΟΔΟΣ

WESTERN MACEDONIA MODEL FOREST

ΕΛΕΥΘΕΡΟ CAMPING

ΠΡΩΤΥΠΟ ΔΑΣΟΣ ΔΥΤΙΚΗΣ ΜΑΚΕΔΟΝΙΑΣ
ΠΗΛΑΡΧΟΥΡΙΣΣΕΣ, Κ. 5937486443

modelforestingr

ΥΠΟΥΡΓΕΙΟ ΠΕΡΙΦΕΡΕΙΑ ΔΥΤΙΚΗΣ ΜΑΚΕΔΟΝΙΑΣ

endergy HELLENIC RENEWABLES

FGRID SOLARCELLS

The festival offered the opportunity to participants to **taste some forest flavors** of Western Macedonia.

The funding by the **sponsors** was very important for the festival.

Update on latest activities

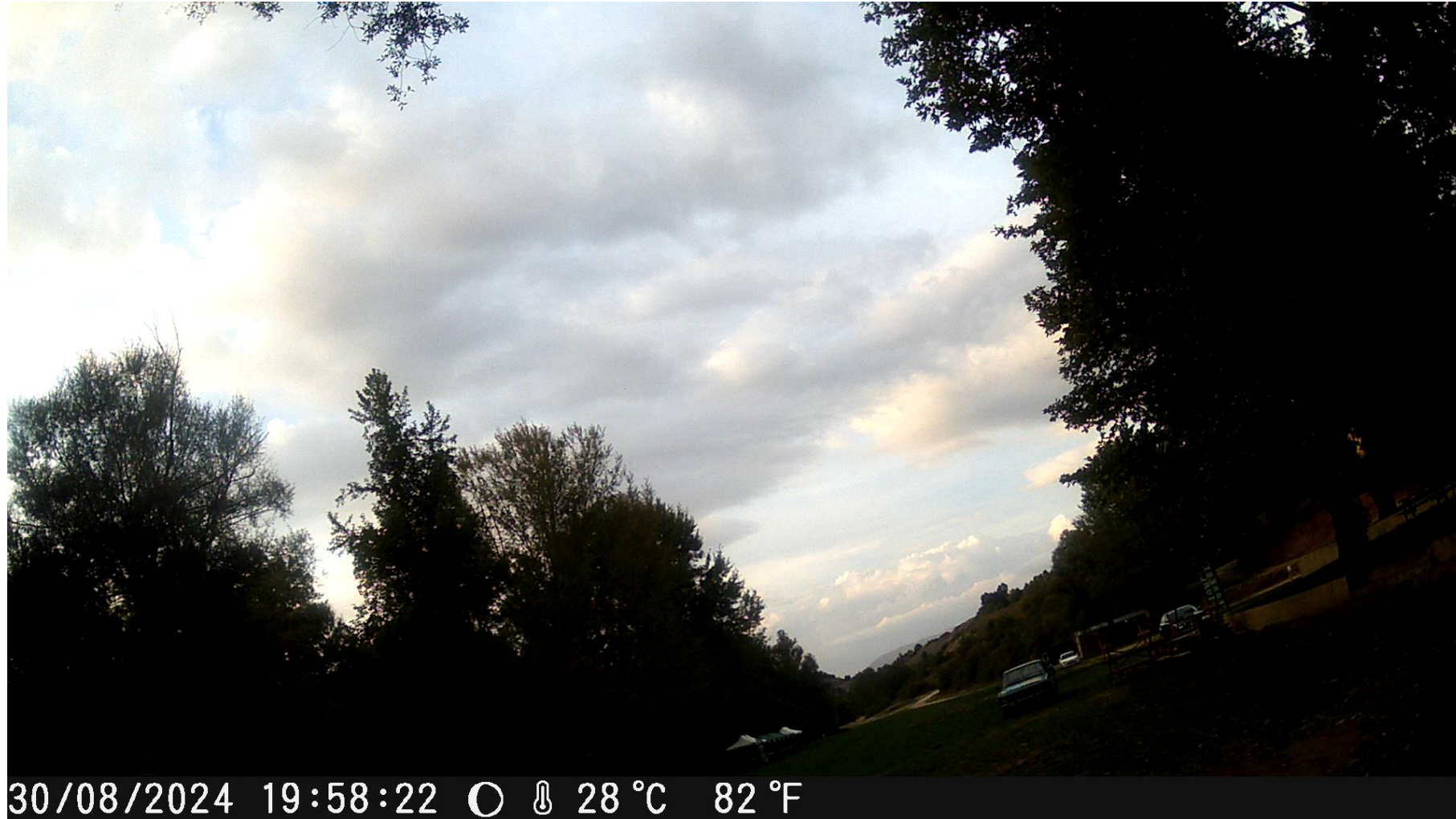
FORESTIVAL 2024



Update on latest activities

FORESTIVAL 2024





Update on latest activities

2o Mental Health Festival



Update on latest activities

2o Mental Health Festival



The aim of the event was to bring together the citizens of Kozani, especially the youth, into contact with the services and agencies in the field of mental health and psychosocial development.

	Ε.Ψ.Υ.Κ.Α. Κινητή Μονάδα - Παδοψυχιατρικό Τμήμα Κινητή Μονάδα Παιδιών-Εφήβων Δυτικής Μακεδονίας Μουσών και Διονύσου Τηλ: 24610 26368
	Δήμος Κοζάνης Διεύθυνση Κοινωνικής Μέριμνας και Παιδείας Τμήμα Κοινωνικής Πολιτικής Αργυροκάστρου 13 Τηλ: 24610 29497
	ΚΑΠΗ/Βοήθεια Στο Σπίτι - Κέντρο Κοινότητας Ξενώνας Φυλοξενίας Κακοποιημένων Γυναικών Αργυροκάστρου 13 Τηλ: 24610 49672
	Συμβουλευτικό Κέντρο Κοζάνης Ροδόπης 5, Κοζάνη, Τηλ: 24610 49672
	ΑΡΕΙΣ Κοζάνης Αγίου Χριστοφόρου 6 Τηλ: 24610 49799
	Ορίζοντες- Κέντρο Πρόληψης των Εξαρτήσεων και Προαγωγής της Ψυχοκοινωνικής Υγείας Π.Ε. Κοζάνης Λεωφόρου Κων/νου 3, Κοζάνη, Τηλ: 2461021077
	ΚΕΘΕΑ Πολυδύναμο Κέντρο & Κινητή Μονάδα Περιφέρειας Δυτικής Μακεδονίας Ουρανίας 8, Κοζάνη Τηλ: 24610 40455
	Σύλλογος Γονέων, Κηδεμόνων και Φίλων Ατόμων με Αυτισμό Π.Ε. Κοζάνης Τηλ: 24610 39224
	Go Alive Σ. Μπλωβίρα 2, Κοζάνη Τηλ: 24613 08380
	Κέντρο Δημερεύσης - Ημερήσιας Φροντίδας ΑμεΑ - Κ.Α.-Η.Φ. «Σύμπλευση Κοζάνης» Κων/νου Καραμανλή 7, Κοζάνη, Τηλ: 2461 025810
	Πρότυπο Δάσος Δυτικής Μακεδονίας

2o FESTIVAL Ψυχικής Υγείας

LET'S GET TOGETHER

 **13/09**
 **Δημοτικό Πάρκο Κοζάνης**
 **10:00**

Εμπιστοσύνη, Γαίρα, Συνεισφορά, Αλληλεγγύη, Συλλογικότητα, Συνεργασία



ΔΗΜΟΣ ΚΟΖΑΝΗΣ
Διεύθυνση Κοινωνικής Μέριμνας & Παιδείας
Τμήμα Κοινωνικής Πολιτικής

 Ε.Ψ.Υ.Κ.Α.
Εταιρία Ψυχικής Υγείας Κοζάνης

Challenges and way forward

1. Rational use of natural resources into the framework of climate change
2. Promotion of Sustainable Forest Management at Regional level in order to enhance the Forest Ecosystems Services, forest biodiversity and organic carbon
3. Development of Forest Fire Protection Plan during the summer period, when the lack of precipitation in combination with high air temperatures leads to forest fires with multiple environmental, economic and social impacts
4. Promotion of alternative uses of wood and non-wood forest products for rural development
5. Effects of climate change: Increased heat, humidity
6. Deforestation
7. Forests and human health
8. Limited community engagement

Possible Solutions

- ✓ Enhanced sustainable forest management -Implementation of Collaborative Governance
- ✓ Skill Development and Training
- ✓ Policy development: Advertising
- ✓ Nature-based intervention focused on improving the health of people (forest therapy, forest bathing e.t.c)
- ✓ Encouraging sustainable agricultural and forestry practices can significantly reduce deforestation
- ✓ Plant More Trees. Engage in tree-planting initiatives in your community or through global organizations
- ✓ Creating a community engagement strategy

How the Mediterranean Model Forest Network (MMFN) can help

- Sharing knowledge and best practices
- Capacity Development
- Strengthen collaboration and synergies among members
- Submit new project ideas

MMFN can be a critical tool to address these challenges by enabling collaboration, sharing resources and building a collective approach.

MedForum2024

9th EDITION | THE MMFN GENERAL ASSEMBLY

Thanks for your attention

Grazie per la vostra attenzione

شكراً على انتباهكم

Gracias por su atención

Merci pour votre attention

Ευχαριστώ για την προσοχή σας

Hvala na vašoj pažnji

Faleminderit për vëmendjen tuaj

Dikkitiniz için teşekkür ederim

Speaker: enter speakers Name